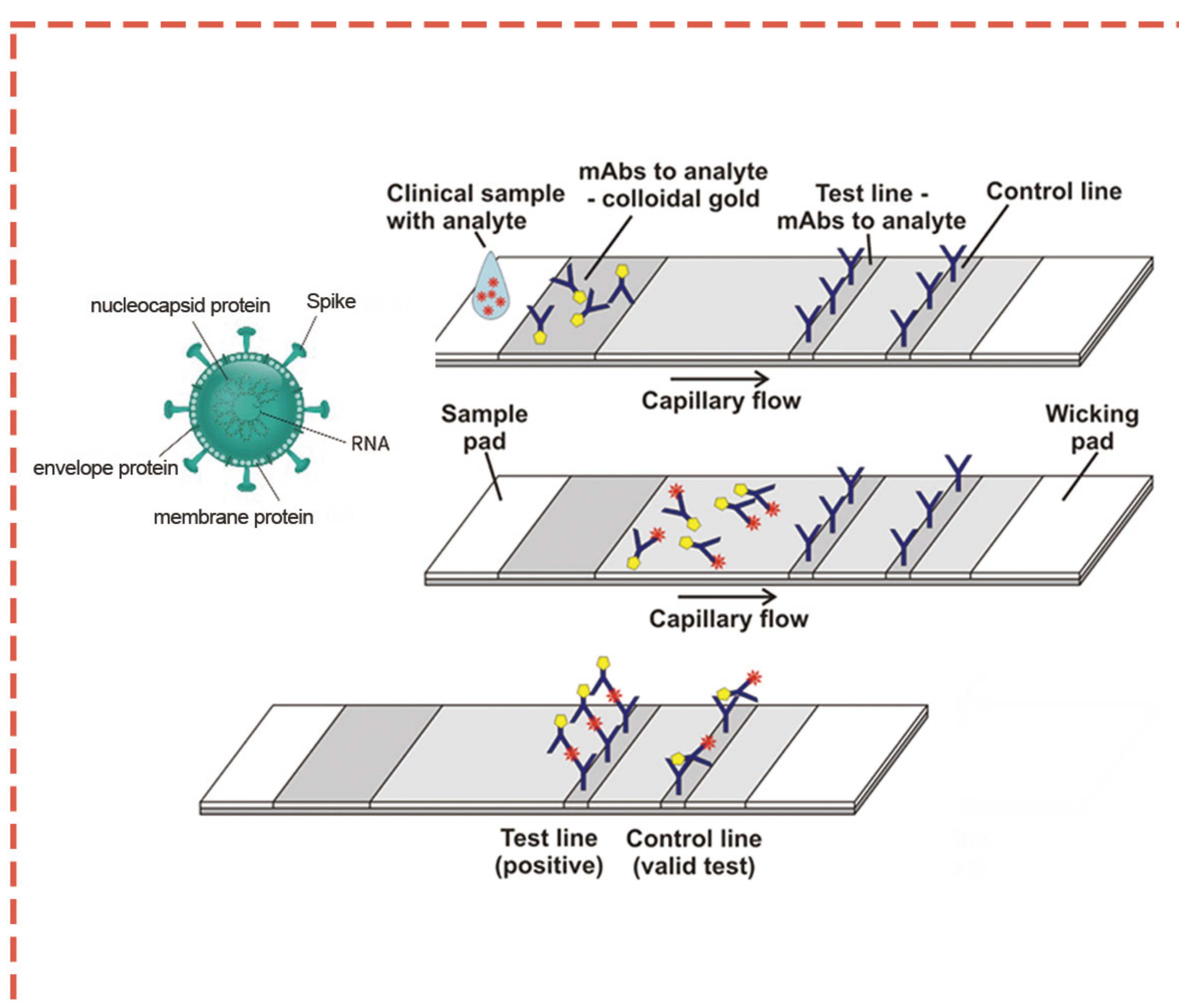


SARS-CoV-2 Antigen Test Kit

(colloidal gold method)

The SARS-CoV-2 Antigen test kit is based on immunochromatographic and use double-antibody sandwich method to detect SARS-CoV-2 antigen. When the concentration of COVID-19 antigen in specimen is higher than the minimum detection limit, the viral antigen will form complexes with labeled antibodies first. Under chromatography, the complexes move forward along the nitrocellulose membrane till captured by pre-coated monoclonal antibody of COVID-19 in detection zone. Through the visible color to interpret the test results.



Why choose Antigen Rapid Test?

Antigen Rapid Test compared with Antibody Rapid Test and Nucleic Acid PCR Detection

Nucleic acid PCR detection method is still the gold standard for SARS-CoV-2 detection. The pathogen can be detected in the early stages of infection, but the long TAT and cumbersome operation are its shortage.

Antibody test is with short TAT and simple operation, but it has a window period. Generally, it can only be detected in 1-2 weeks after infection.

Advantages of Antigen Rapid Test

Although the development cycle of antigen detection is relatively long, its

1. Sensitivity and specificity are higher than antibody detection
2. The pathogen can be detected at the initial stage of infection
3. Short TAT and simple operation.
4. No professional technicians and equipment are required, and the test can be completed in 15 min.
5. Home use.
6. Personal test.



1

SARS-CoV-2 Antigen Test Kit (colloidal gold method)
Saliva sample collection (1 test/box)

Product name	components	Loading quantity
SARS-CoV-2 Antigen Test Kit (colloidal gold method)	Test card	1
	Sample diluent	500 μ L
	Saliva collector	1
Saliva sample collection	dropper 1	1
	dropper 2	1



2

SARS-CoV-2 Antigen Test Kit (colloidal gold method)
Nasal swab sample collection (1 test/box)

Product name	components	Loading quantity
SARS-CoV-2 Antigen Test Kit (colloidal gold method)	Test card	1
	Sample diluent	500 μ L
	Sample extraction tube	1
Nasal swab sample collection	Droppers lid	1
	sampling swab	1



3

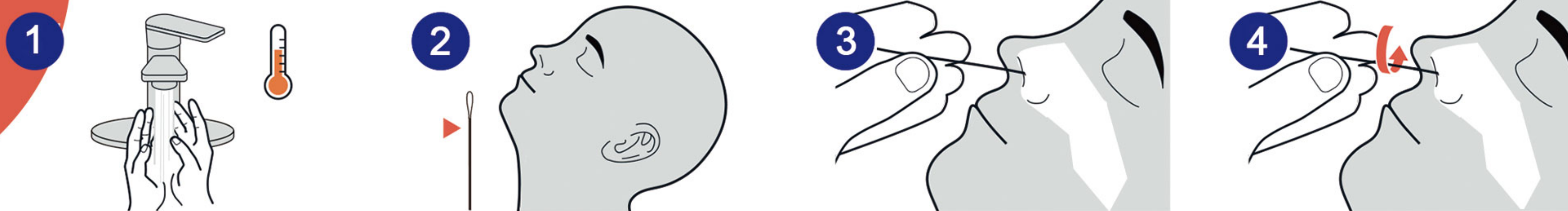
SARS-CoV-2 Antigen Test Kit (colloidal gold method)
Nasal swab sample collection (20 tests/box)

Product name	components	Loading quantity
SARS-CoV-2 Antigen Test Kit (colloidal gold method)	Test card	20
	Sample diluent	50ml*2
	Sample extraction tube	20
Nasal swab sample collection	Droppers lid	20
	sampling swab	20

SARS-CoV-2 Antigen Test Kit (colloidal gold method)

Nasal swab sample collection

Sample Collection



1 Prep space and wash hands

Disinfect surfaces where you will be completing your test. Blow your nose. Then thoroughly wash your hands with soap and water for 20 seconds prior to collection.

2 Prepare to collect

Before inserting the swab, locate the perforation on the swab (near the tip) as you will need this after you collect your sample. Then tilt your head back to approximately a 45 degree angle.

3 Insert nasal swab

Gently and slowly insert the swab into your nostril

4 Collect swab sample

Rotate the swab 3 times all the way around the nasal wall with a slight pressure. Remove swab.

*Please see user instruction for details

Detection Phase





1/ Empty the diluent into dropper



2/ Immerse the swab into dropper and squeeze the dropper 5 times

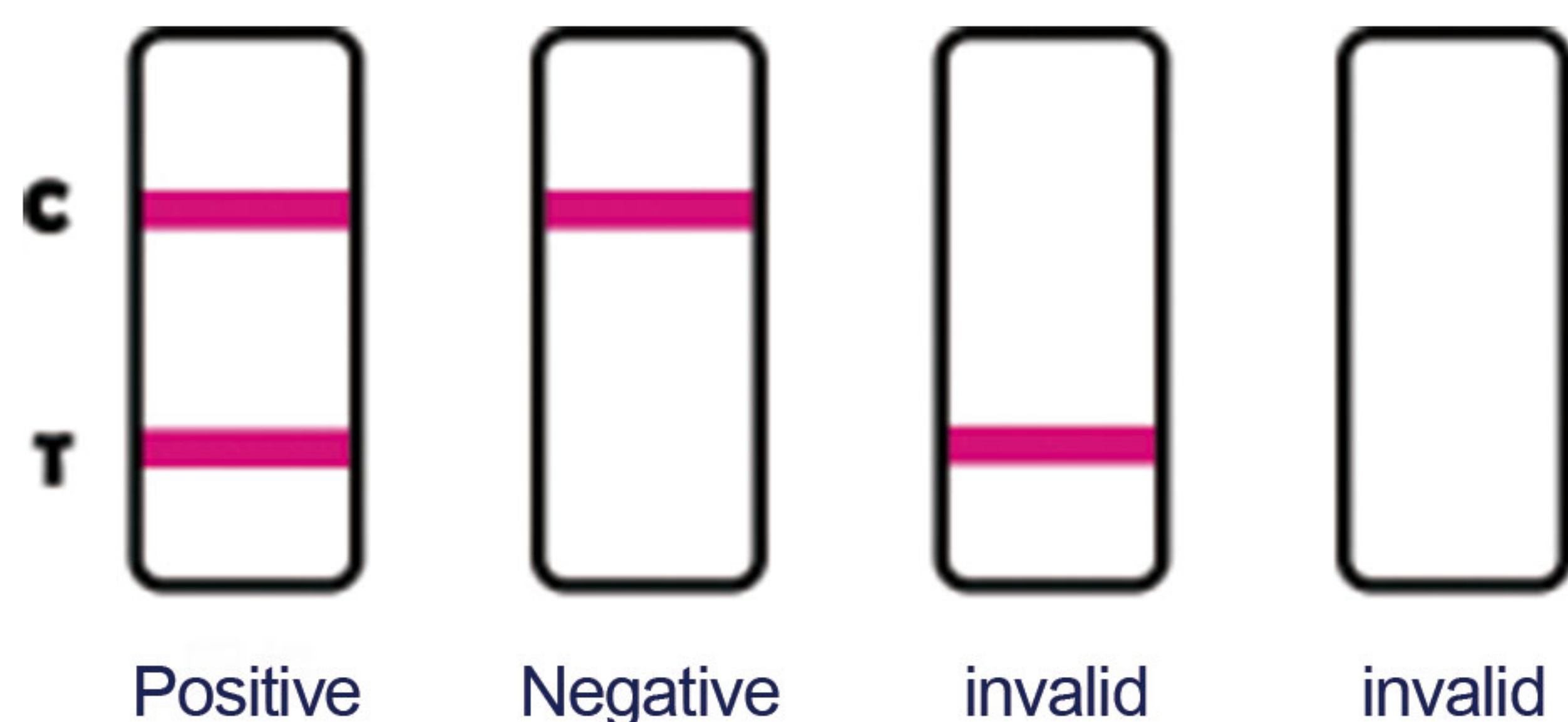


3/ Cover the lid securely



4/ Drip reagent (3 drips)

Result Read



C Line	T Line	Result
Pink/purple	Pink/purple	Positive
Pink/purple	Colorless	Negative
Colorless	Whether color is visible or not	Invalid test, retest

Compare with PCR detection, nasal swab test show good sensitivity and specificity

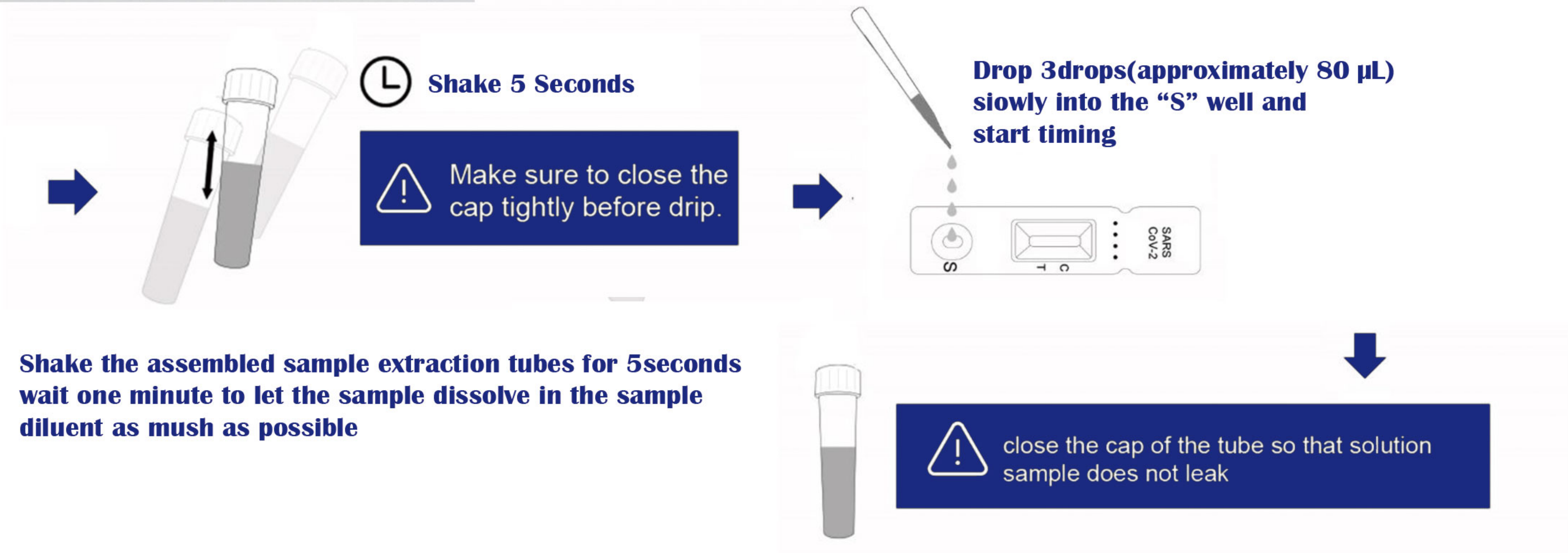
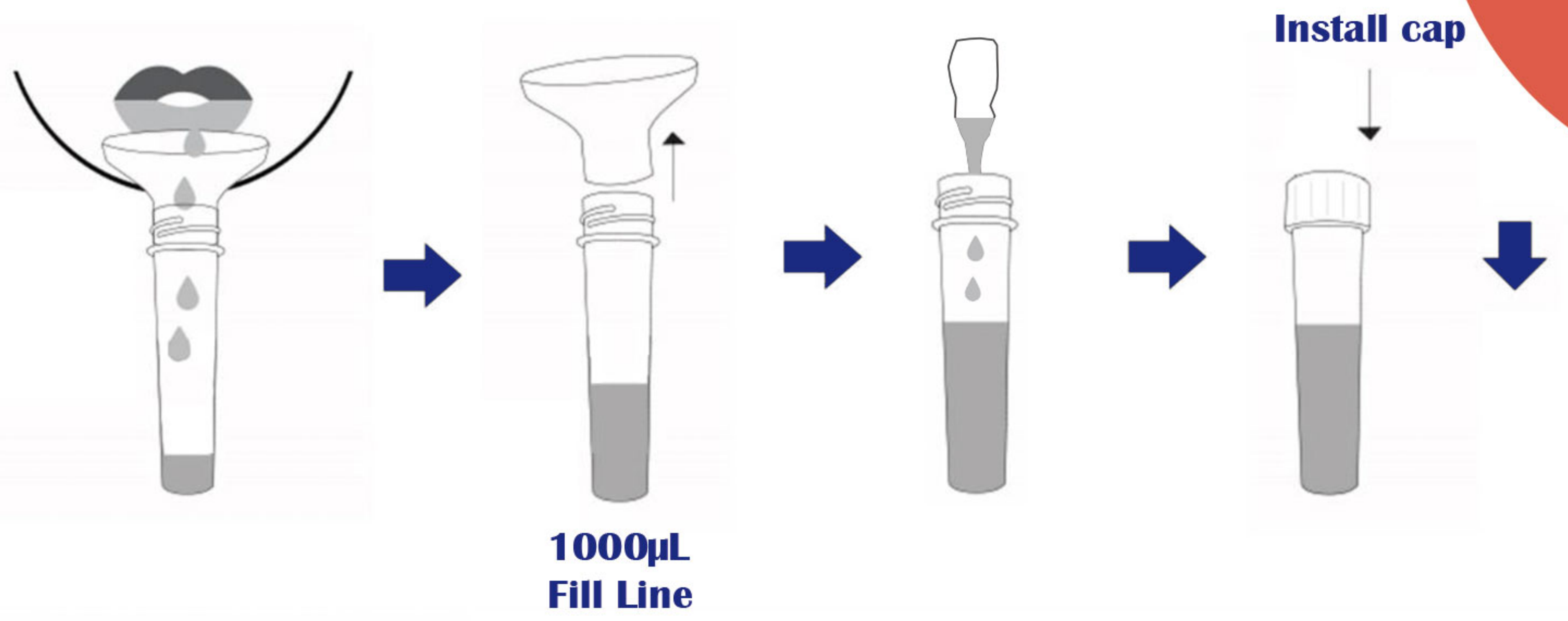
Sensitivity: 96.23%

Specificity: 99%

SARS-CoV-2 Antigen Test Kit (colloidal gold method)

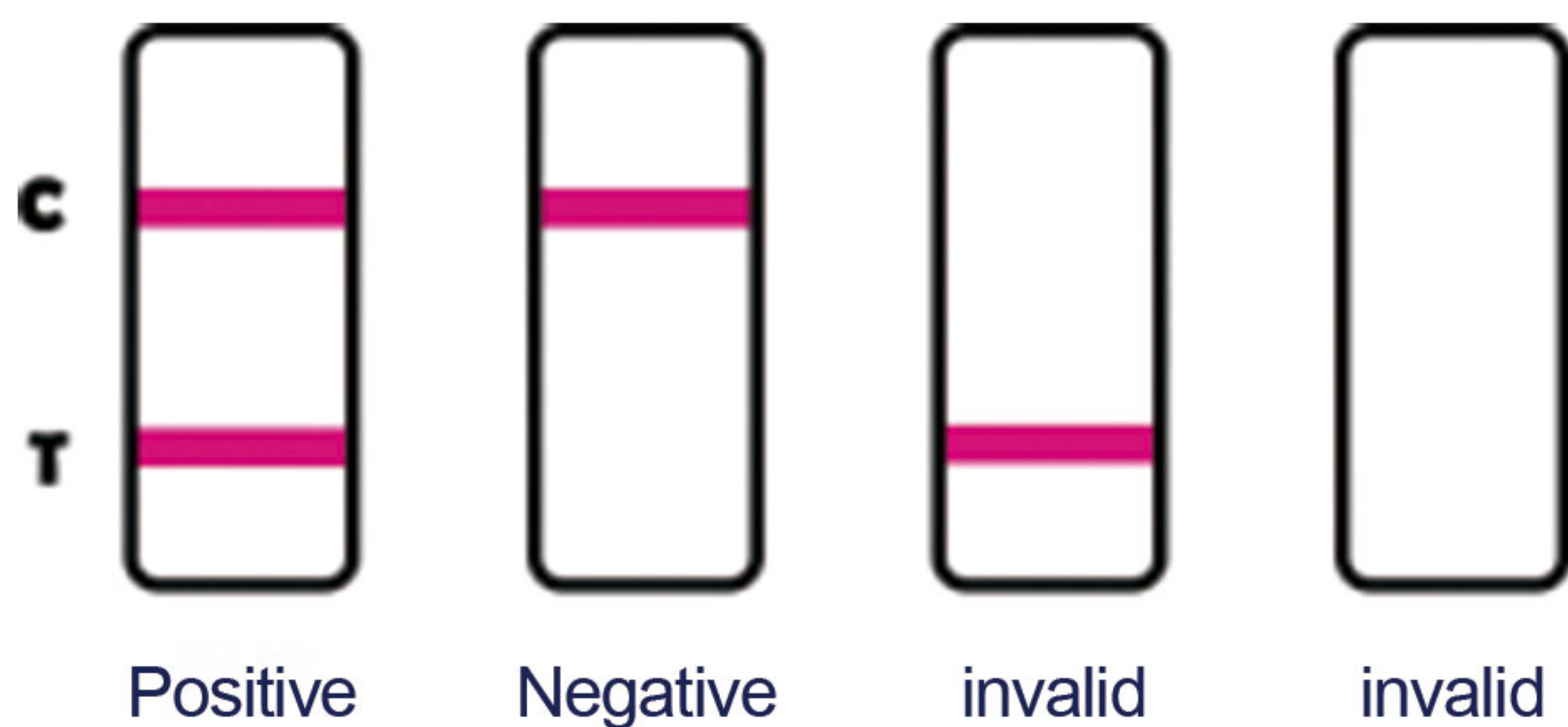
Saliva sample collection

Detection Phase



Result Read

*Please see user instruction for details



C Line	T Line	Result
Pink/purple	Pink/purple	Positive
Pink/purple	Colorless	Negative
Colorless	Whether color is visible or not	Invalid test, retest

Compare with PCR detection, nasal swab test show good sensitivity and specificity

Sensitivity: 96.23%

Specificity: 99%

BioTeke

BioTeke Corporation(wuxi) Co.,Ltd

Address : 4th floor, D5, No.1719,Huishan Avenue,Wuxi, Jiangsu,CN214174

Email: info@bioteke.cn